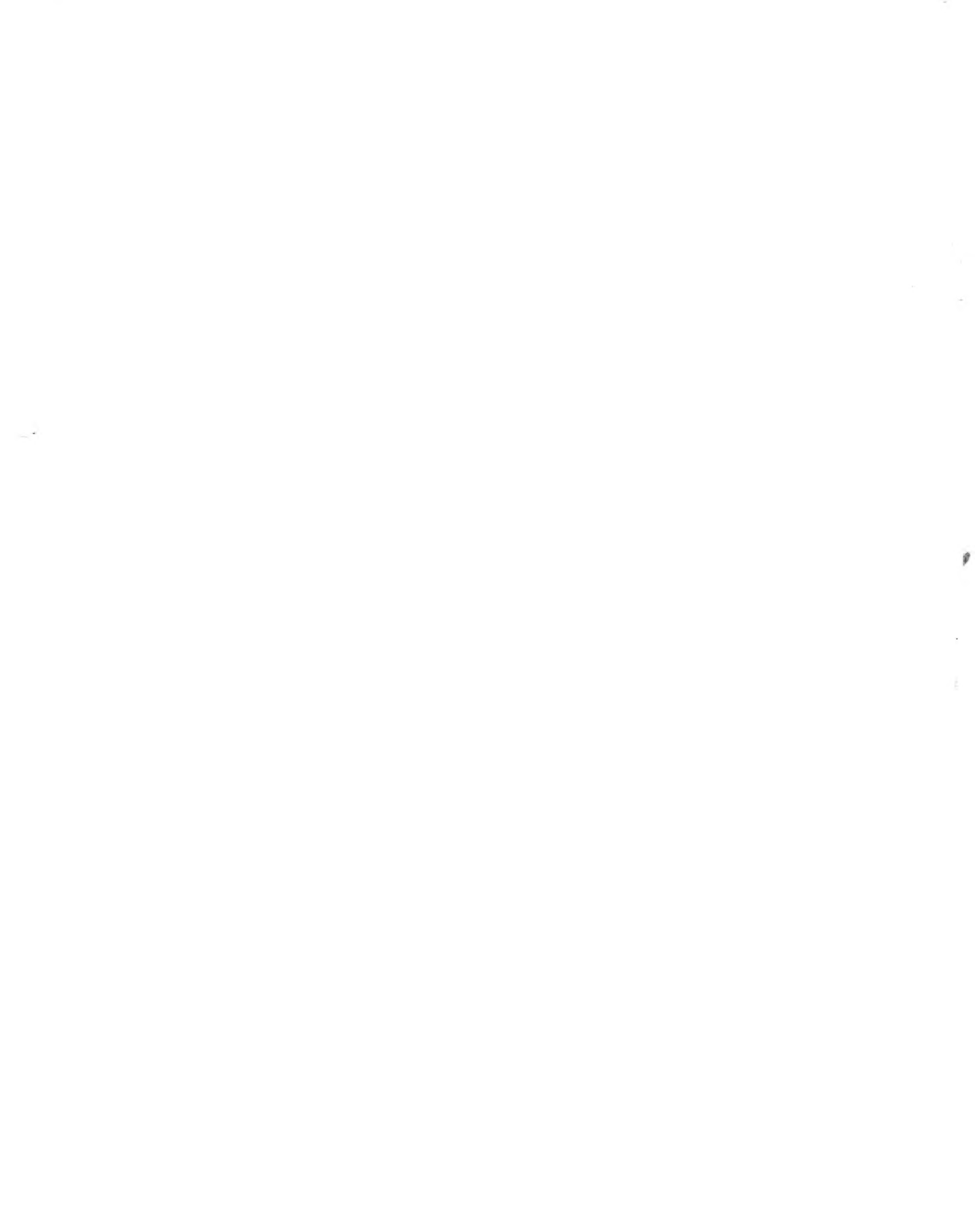


Historic, Archive Document

Do not assume content reflects current scientific knowledge, policies, or practices.



62.51

The Plumfield Nurseries

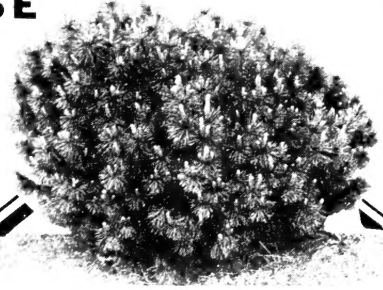


TREES THAT PLEASE

NEBRASKA GROWN



AUSTRIAN PINE



MUGHO PINE



BLACK HILLS SPRUCE



CONCOLOR FIR



JUNIPER WELCHI



PFITZER'S JUNIPER



JUNIPER FULGENS

2105 NORTH NYE AVE.

PHONE 102

FREMONT

1947

NEBRASKA

★
*Largest
and
Finest
Selection
in the
Mid-West*



HOME OF L. A. MOFFET, MANAGER

★
*We Urge
You
to Visit
Our
Nurseries*



SOME OF THE ADVANTAGES OF BUYING FROM *Plumfield Nurseries . . .*

Years of experience in growing Nursery Stock and solving many of your planning problems. A large organization of trained help. Twelve of our employees have a total of 380 years' experience. Improved modern warehouse, ventilated and temperatures controlled, keeping stock in healthy growing condition. Modern equipment enables us to grow Nursery Stock that gives satisfaction to the most particular buyer. Our stock grown at Fremont, Nebraska, in clean, cultivated fields under ideal climatic conditions for replanting. A new Certificate of Inspection from State Inspector each year. Stock handled with the least possible exposure assuring high survival results. Low prices for fine quality guaranteed Nursery Stock.

HOW TO ORDER

Please name second choice. In case we are out of variety or grade wanted, this will help us to make prompt shipment.

PLEASE STATE HOW TO SHIP EXPRESS or FREIGHT CHARGES COLLECT

If mail shipment is desired, add 10% to order unless order is under \$2.00, then add 20c to cover special packing and postage.

Trees over 3 to 4 feet high must travel by Express, Truck or Freight.

Our NURSERY STOCK is grown on the best land in the Platte and Elkhorn valleys. We use modern machinery; have modern FROST-PROOF STORAGE, and life-long TRAINED HELP. Our office and packing grounds are located one block south of U. S. Highway No. 30, on Nye Avenue.

We extend you a personal invitation to visit our NURSERIES AND STORAGEES at any time of the year.

OUR GUARANTEE

Our NURSERY STOCK is guaranteed to reach you in a healthy, growing condition. Stock that fails to show growth will be replaced, if notified by July 1st following delivery. After this date, we will replace at one-half the current price, if notified by October 1st, following delivery, F. O. B. our packing grounds.

Replacements will be made of same size as originally bought. Planting service at cost.

SHORTAGES OR COMPLAINTS MUST BE REPORTED AT ONCE

If any NURSERY STOCK proves untrue to description, we hold ourselves in readiness, on proper proof, to replace it or refund the amount paid, but we shall, in no case be liable for any sum greater than the amount originally received for said NURSERY STOCK.

Plumfield EVERGREENS

SPECIMEN STOCK

We offer one of the finest assortments of Evergreens in the West. They are all transplanted from time to time, to develop the required root system and pruned to give them shape. We invite you to visit our fields and tag out your selection of Evergreens. We have thousands of Evergreens from which to make your selection.

NOTE—Evergreens are dug with ball of earth and burlapped. They will be shipped by freight or truck unless otherwise instructed. Can not be mailed. The burlap, next to the earth, should be left on when planted. Low and spreading types of Evergreens are measured across.

The most popular and hardy Evergreens in the Middle West are the various types of Junipers. In form they vary from those growing flat on the ground to those growing 80 to 100 feet tall.

Our Evergreens are all hardy varieties and will do well any place in the Mid-West. All new varieties introduced by us have been tested for a number of years and have proven very worthy. We have devoted much time in search of better types to propagate for this territory and are proud to offer the trade such good varieties as listed in this catalog, along with some of the older varieties which have been on the market for a number of years and speak for themselves.



DOUGLAS FIR

The Douglas Fir are well known, however, the type listed here differs from the Western type as well as the Northern and Southern types. This one is native of Colorado, stands considerable drouth. Foliage is bluish-green, grows 1 to 2 ft. per year, is symmetrical and fairly compact. Makes a nice yard tree, also used extensively for windbreaks.

18-24 in.....	\$4.00
2-2½ ft.....	5.00
2½-3 ft.....	6.00
3-3½ ft.....	7.00
3½-4 ft.....	8.00



CONCOLOR FIR

Has silvery toned foliage, dull pointed needles, soft to touch. Grows compact and symmetrical making a very fine tree for the yard. Is also planted for windbreak protection. Will grow 6 to 12 inches a year when established. Ultimate height 50 to 60 feet. Roots deep where soil conditions permit—this habit aids in vigor. Needs little pruning, if any.

18-24 in.....	\$4.50
2-2½ ft.....	5.50
2½-3 ft.....	6.50

Evergreen Windbreaks
You will find varieties and prices listed on page 11.



PLUMFIELD EVERGREENS



PLUMFIELD EVERGREENS

Plumfield PINES and SPRUCES



GRAFTED MOERHEIM BLUE SPRUCE

A selected, blue-colored type. Taken from the Colorado Blue variety.

2-2½ ft.....	\$12.00
2½-3 ft.....	15.00
3-3½ ft.....	18.00
3½-4 ft.....	21.00
4-4½ ft.....	24.00

COLORADO MEDIUM BLUE

Medium in color. Gets more blue as it attains age.

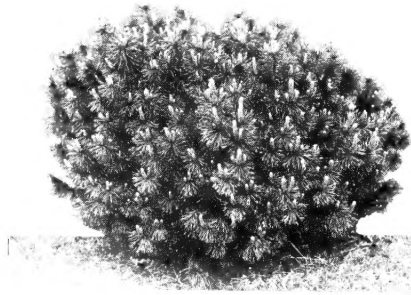
2-2½ ft.....	\$7.50
--------------	--------



CANADENSIS ALBERTIANA Black Hills Spruce

Native of the Black Hills of South Dakota. Foliage varies from dark green to blue. One of the most hardy Spruce. Grows symmetrical, compact and very shapely.

15-18 in.....	\$2.75
18-24 in.....	3.25
2-2½ ft.....	4.00
2½-3 ft.....	5.00
3-3½ ft.....	6.50



PINE MUGHO

Very hardy. Spreading, dwarf, compact habit. Fine for rockeries, foundation plantings, used in front of larger growing varieties.

12-15 in.....	\$3.00
15-18 in.....	4.00
18-24 in.....	5.00
2-2½ ft.....	6.00

PINUS STROBUS (White Pine)

Native of the North and planted extensively in the Middle West. Grows from 12 to 18 inches a year. Ultimate height 60 to 80 feet. Foliage bluish green, needles soft, 2 to 3 inches long.

3½-4 ft.....	\$ 7.00
4-4½ ft.....	8.00
5½-6 ft.....	10.00

PINUS REGENSIS SYLVESTRIS (Scotch Pine)

This variety has superiority over other Scotch Pines. Very hardy. Grows straight and fast, does well on light, dry soils. Grows from 12 to 18 inches a year. Ultimate height 60 to 80 feet. Foliage light green, needles 2 to 3 inches long, buds brown.

18-24 in.....	\$3.00
2-2½ ft.....	3.75
2½-3 ft.....	4.50
3-3½ ft.....	6.00

TAXUS, YEW

Brevifolia, Upright.

Broad base, pyramidal tree. Waxy green foliage. A very good tree for planting on the north or shady places.

TAXUS CUSPIDATA, Spreading Yew

Spreading form. Dark green needles. Valuable for foundation planting.

15-18 in.....	\$6.50
18-24 in.....	8.00



PINUS NIGRA (Austrian Pine)

An outstanding Pine in the Middle West. Quite resistant to smoky atmosphere and irregular weather conditions. Has long needles, rich dark green. The dormant eyes at tips of branches are white and resemble candles. Grows about 12 inches a year. Ultimate height 50 to 60 feet.

18-24 in.....	\$3.00
2-2½ ft.....	3.75
2½-3 ft.....	4.50
3-3½ ft.....	6.00
4-4½ ft.....	8.00



PINUS PONDEROSA (Bull or Western Yellow Pine)

Native of North America. Nebraska's only conspicuous native Pine. Has extremely long glaucous needles. Very attractive. Stands almost unlimited drought. Develops into a pyramidal compact tree. Grows ten to fifteen inches a year. Ultimate height 50 to 60 feet.

SOLD OUT

Smaller Landscape Evergreens dug with bare roots and packed in wet moss priced on page 9.

Plumfield **EVERGREENS** Juniper Varieties

VIRGINIANA TYPES

VIRGINIANA BLUE RAPIDS (Grafted). 30-40 ft.

Foliage bluish-green color. Leaves not so sharp, growing on stout, coarse, horizontal branches which set close to each other on a straight, rugged, fast-growing stem. Hardy and one of the best grafted Juniper Virginiana varieties. Northern origin. Retains its color in winter.

2½-3 ft.	3-3½ ft.	4-4½ ft.
\$6.00	\$7.00	\$8.00
4½-5 ft.	5-5½ ft.	5½-6 ft.
\$9.00	\$10.50	\$12.00
		6-7 ft.
		\$13.50



JUNIPER CANNARTI



DUNDEE JUNIPER

VIRGINIANA CANNARTI. Cannart's Red Cedar. 20-30 ft.

Foliage deep, rich green. Main stem very straight. Branches almost horizontal. Requires shearing to attain compactness.

2-2½ ft.	2½-3 ft.	3-3½ ft.
\$6.00	\$7.00	\$8.00



CHINESE JUNIPER



JUNIPER VIRGINIANA
Red Cedar

VIRGINIANA. Red Cedar (Platte River Type). 30-40 ft.—This variety is well known throughout the country. The Platte River type seems to give the most satisfaction. Dense and columnar. Has bluish-green foliage turning to a reddish-purple in late fall or winter. This variety is used extensively in landscape work and also for wind-break protection.

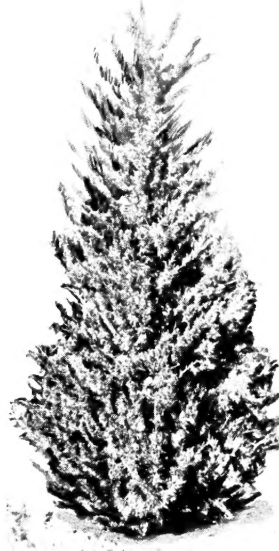
3-3½ ft.....	\$5.00	4½-5 ft.....	\$ 8.50
3½-4 ft.....	6.00	5-5½ ft.....	10.00
4-4½ ft.....	7.00	5½-6 ft.....	11.50

For Spreading Varieties, See Page 8.

VIRGINIANA PYRAMIDIFORMIS (Dundee Juniper).

Compact, symmetrical growth. Green foliage changing to purple in winter. A very desirable, pyramidal tree.

2-2½ ft.	2½-3 ft.	4-4½ ft.	4½-5 ft.
\$6.00	\$7.00	\$11.00	\$12.00
5-5½ ft.	5½-6 ft.	6-7 ft.	
\$13.00	\$14.00	\$15.00	



VIRGINIANA GLAUCA

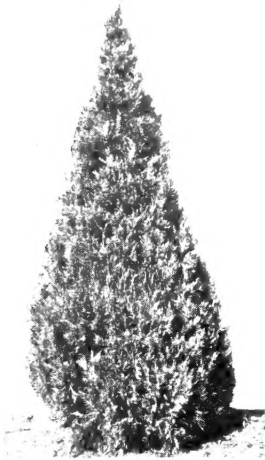
CHINENSIS. Chinese Juniper—A native Juniper of Asia where it covers large areas. The needles are sharp and prickly, light green with a slightly bluish cast. It averages 15 to 20 feet, narrow and columnar cone-like specimens. Recommended for all sections of the country.

2-2½ ft.....	\$5.00	2½-3 ft.....	\$6.00
3-3½ ft.....	7.00	3½-4 ft.....	8.50

VIRGINIANA GLAUCA. Silver Red Cedar. 15-20 ft.

An old variety. Pyramidal tree of moderate size. Silver blue color. Brightest in spring, darkening as season progresses. Stands trimming well.

2-2½ ft.	2½-3 ft.	3-3½ ft.
\$6.00	\$7.00	\$8.00



JUNIPER MOFFETI

Another wonderful tree selected from the Rocky Mountains of Colorado and is a dandy tree. Foliage sharp, light greenish-silver color, tips of branches are more silver. Habit is upright and pyramidal, branches grow close together making a very dense tree. Grows about 12 inches a year. Can be sheared if desired.



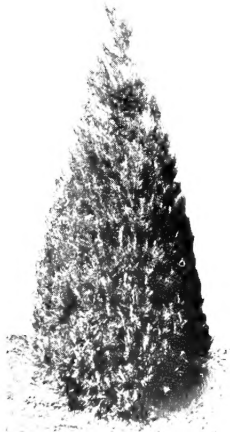
JUNIPER WELCHI

The Welchi is the most satisfactory columnar type Scopulorum on the market today. Foliage is a light, evenly mixed greenish-silver. Leaves sharp but lay very close to the stem. Branches are very full and tufted at the base tapering out to a prominent point, yet they are sharply curved upward forming a fine outstanding columnar tree. Grows about one foot a year. Ultimate height 20 to 25 feet. Can be sheared if necessary.



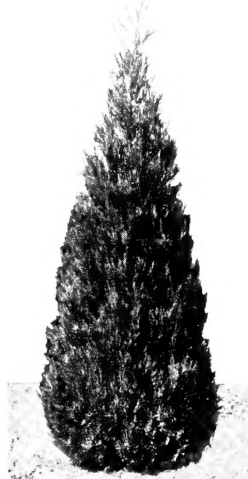
JUNIPER FUNALIS

This variety has (if possible) proved to be more vigorous than most of the Scopulorums. Whipcord, bluish-green foliage. Straight stem with close set branches. Branches grow nearly horizontal but will retain more compactness if sheared once a year. Grows one foot a year. Ultimate height 20 to 30 feet.



JUNIPER PATHFINDER

This tree found favor almost instantly by reason of its outstanding silver foliage. It is upright in habit, full at base, limbs curved upward covered with shining silver-blue foliage making it an outstanding tree of the times. Will grow about one foot a year. Ultimate height 20 to 30 feet. You can shear this tree if necessary.



JUNIPER SILVER BEAUTY

A native of the San Isabel Forest region, and truly a beautiful tree. It is upright, full at base, branches have upward trend, foliage is greenish-silver, more silver on the exposed tips of branches. Grows about one foot a year. Ultimate height 20 to 30 feet. Can be sheared if necessary.



JUNIPER SUTHERLAND

This type of evergreen is definitely green in color as compared to the other varieties of Scopulorum. It is bushier in growth habit than the others, and consequently wider at the various given heights than is the case with other varieties of the same size. Its beauty in our opinion is to allow it to grow in a natural manner without shearing.

EVERGREENS Fremont, Nebraska

What Scopulorum is and Why it is Desirable

In brief, it is commonly known as Western Red Cedar or Silver Cedar and is native of Nebraska west of North Platte to the Rocky Mountains. Its range north is through the Dakotas and Montana and south into New Mexico. This variety thrives where the annual moisture is only six to eight inches a year. It differs from our local Cedar as the foliage runs more to silver color and as a rule is more symmetrical and compact in habit. It played a very important part in furnishing fence posts and logs for cabins for the Pioneers of the Northern Great Plains States. We find it most useful for this part of the country as it has a great ornamental value as well as for windbreaks and timber lots. You will note that we have selected some fine specimens for propagation and offering many of them as ornamental trees under Grafted Junipers.



JUNIPER DECUMBENS



JUNIPER FULGENS

This tree will not display its beauty until it has attained a growth of six feet or more, displaying more beauty each year. It has shining silver-green foliage. Each year the new branches, while soft, grow downward and as the season goes on the branches stiffen and turn directly upward. As the tree develops it becomes a mass of well clothed horizontal branches with their tips perpendicular with the leader.

This tree is a native of Colorado. Its habit is upright, pyramidal, full at base and grows compact. Bicolor foliage, bluish-green becoming more silver at the ends of the branches. The branches grow more or less opposite, forming flat Arbor Vitae like limbs. Will grow about one foot a year. Ultimate height 20 to 30 feet. Can be sheared if necessary.

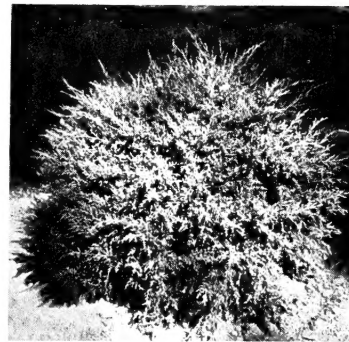
Prices on Grafted Scopulorum Evergreens

2½-3 ft.....	\$ 7.00
3-3½ ft.....	8.00
3½-4 ft.....	9.00
4-4½ ft.....	10.50
4½-5 ft.....	12.00
5-5½ ft.....	13.50
5½-6 ft.....	15.00
6 -7 ft.....	17.50

Why We Grow Grafted Evergreens



Evergreens, like other varieties of trees, are being improved and we have devoted a number of years producing trees that are outstanding in color and habit of growth. To obtain these results we graft from trees that we have carefully selected and held under observation long enough to prove their superior qualities. Evergreens are often planted in pairs and in many cases one or more pairs are desired on a landscape planting. If grafted types are planted in pairs or in any amount of the same variety they will always grow and look alike. We can assure you that no finer grafted evergreens are produced than we offer in this catalog. The price of grafted evergreens is slightly higher than common seedling types as the cost of producing them is more.



GLOBE SCOPULORUM



SEEDLING SCOPULORUM

JUNIPER SCOPULORUM, Globe Shape—Compact globose form of Scopulorum Juniper. Silvery foliage, very hardy.

12-15 in.....	\$4.00	15-18 in.....	\$4.75
18-24 in.....			5.50

SCOPULORUM, Colorado Silver Juniper, 25-30 ft.—Silvery foliage and close symmetrical upright growth. Thrives in hot, dry weather, when the color is the brightest. Very hardy. Grown from seed.

2-2½ ft.....	\$ 4.25	4-4½ ft.....	\$ 8.50
2½-3 ft.....	5.00	4½-5 ft.....	9.50
3-3½ ft.....	6.00	5-5½ ft.....	10.50
3½-4 ft.....	7.50	5½-6 ft.....	12.00
6 -7 ft.....			13.50

Plumfield SPREADING JUNIPERS

SPREADING JUNIPERS for Foundation and Border Plantings



SABINA JUNIPER

Grows a trifle more upright than Pfitzer with fan-shaped branches. Is equally as hardy and has deep green foliage. Withstands smoky conditions in cities.

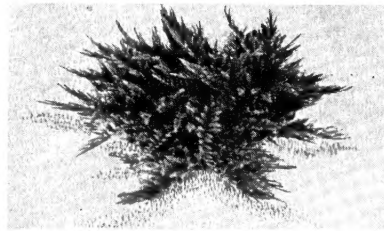
15-18 in.....	\$3.75
18-24 in.....	4.50
2-2½ ft.....	5.50
3-3½ ft.....	7.50

VIRGINIANA ELEGANTISSIMA LEE

Gold Tip

Dark green foliage. Golden tipped, more so in autumn. The natural tendency is to grow low and spreading. Very hardy and desirable, where color is required.

18-24 in.....	\$5.00
2-2½ ft.....	6.00



TAMARIX JUNIPER

(Juniperus sabina tamariscifolia)

A beautiful dwarf. Handsome, light green, lacy foliage resembling the delicacy of the Tamarisk shrub thickly fills the low, creeping plant, forming a dense mat of misty green. You will find it very charming as an edger or in the rock garden.

12-15 in.....	\$3.00
---------------	---------------



PFITZER'S JUNIPER

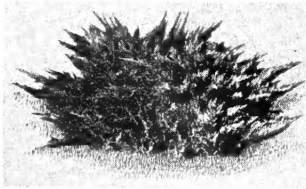
(Juniperus chinensis pfitzeriana)

Exceptionally beautiful, graceful and hardy—no wonder it is one of the most popular. Handsome, feathery, gray-green foliage covers the arching, spreading branches as it develops its broad, picturesque form. Hardy everywhere, and does well in shade as well as sunlight.

18-24 in.....	\$4.50
2-2½ ft.....	5.50
2½-3 ft.....	6.50
3-3½ ft.....	7.50

**VISIT OUR NURSERIES AND SELECT
YOUR EVERGREENS**

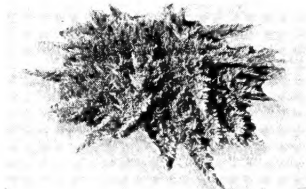
Prostrate and Creeping Junipers for Ground Cover



JUNIPER ADMIRABILIS

This juniper belongs to a specie found in the Rocky Mountains. Its habit of growth is horizontal but it is so compact that it makes a solid mat of evergreen, covering the ground completely. Foliage bluish green. Grows 6 to 8 inches high. Spreads rapidly, yet retains its compactness. A very fine plant to use for covering graves, terraces or any place where a low beautiful covering is wanted.

12-15 in.....	\$3.00
15-18 in.....	3.50
18-24 in.....	4.25

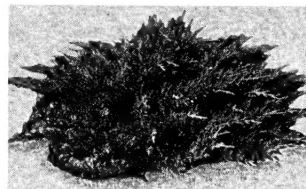


ANDORRA JUNIPER

A horizontal juniper with grayish-green foliage turning to a reddish purple in early winter. Spreads rapidly, making a fine ground cover eight to ten inches high.

12-15 in.....	\$3.00
15-18 in.....	3.50
18-24 in.....	4.25

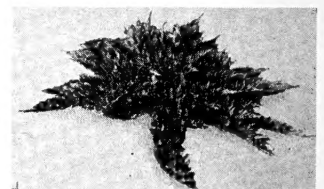
The above Junipers are used for terrace, rock garden and grave covering.



JUNIPER FILICINUS MINIMUS

This pretty little juniper is also a variety of the Rocky Mountains. It is one of the finest foliage evergreens of the juniper family. Its short horizontal limbs covered with delicate small branchlets forming fern shaped branches makes it a gem for the rock garden or any other place that a slow growing prostrate evergreen is desired. Grows 4 to 6 inches high, spreads slowly and is very compact. Green foliage.

12-15 in.....	\$3.00
15-18 in.....	3.50
18-24 in.....	4.25



JUNIPER LIVIDUS

This is another fine variety of the Rocky Mountain region. Foliage is bluish-green with a silver cast. Branches more slender but very well furnished and does make a remarkable plant. It grows 4 to 6 inches high and spreads reasonably fast, making it very desirable to use.

12-15 in.....	\$3.00
15-18 in.....	3.50
18-24 in.....	4.25

Plumfield **EVERGREENS** Juniper Varieties

EVERGREEN ENTRANCE PLANTING

No. 1

ROOTS WRAPPED IN MOSS

You can now dress up that front entrance to your home at a very small cost. Plant these beautiful evergreens. Collection includes two Silver Junipers, 18 inch; two Spreading Junipers, 12 inch.

Postpaid for \$4.95

LARGER SIZES

No. 2

ROOTS WRAPPED IN MOSS

2 Pyramidal Junipers, 24 inches.
2 Spreading Junipers, 15 inches.

Postpaid for \$6.45



FRONT ENTRANCE PLANTING

No. 3

6 FINE EVERGREENS, ROOTS WRAPPED IN MOSS

2 Silver Juniper, 2 feet tall.

2 Savin Juniper, 12 inches across.

2 Mugho Pine, Dwarf, 12 inches across.

Prepaid for\$7.98

Plant Evergreens for Summer Beauty and Winter Coloring

FRONT ENTRANCE PLANTING



CREeping JUNIPERS

GROUND COVERING CREEPING JUNIPERS

No. 4

ROOTS WRAPPED IN MOSS

Beautiful evergreens. Grows about 6 inches high and forms a solid mat. Sometimes called Carpet Junipers. Very desirable for Permanent Grave Blankets, Rock Gardens and Terraces.

4 plants are sufficient for one grave.
10-12 inches. Postpaid. \$1.98.



FIELD PICTURE

Largest and Finest Collection in the Mid-West



PLUMFIELD EVERGREENS

EVERGREENS for Windbreaks . .



Think of them as matured and the protection they afford against the cold and hot winds. They are everlasting. Our Evergreens are dug fresh from the Evergreen beds at planting time and shipped immediately. The crucial time for Evergreens is usually July and August, following spring planting, therefore, they should be well protected, cultivated, mulched with straw, and watered through this period.

Evergreens cannot be packed with other stock, but will be shipped separate. As a rule the frost does not get out as soon.

TRANSPLANTING—These Evergreens have all been transplanted one or more times. The letter "T" following the size indicates the number of times transplanted. Transplanting is done to develop more fibrous roots which start much faster than large heavy tap roots. This class of stock will give you a better percentage of survival than stock not transplanted.

FIRS

CONCOLOR FIR—Grows into a very symmetrical tree. Silver blue foliage.

	Per 10	Per 25	Per 50	Per 100
10-12 inch T	\$ 2.50	\$ 5.50	\$10.50	\$20.00
6-10 inch T	2.00	4.50	8.50	16.00

DOUGLAS FIR—Grows to a tall symmetrical tree.

	Per 10	Per 25	Per 50	Per 100
10-12 inch T	\$ 2.50	\$ 5.50	\$10.50	\$20.00
6-10 inch T	2.00	4.50	8.50	16.00

SPRUCE

BLACK HILL SPRUCE—Slow growing spruce. Blue-green foliage.

	Per 10	Per 25	Per 50	Per 100
12-18 inch TTT	\$ 8.50	\$18.50	\$36.00	\$70.00
10-12 inch TTT	6.50	13.50	26.00	50.00
10-12 inch T	2.50	5.50	10.50	20.00
6-10 inch T	1.75	3.50	6.75	13.00

COLORADO BLUE SPRUCE—The much envied Blue Spruce.

	Per 10	Per 25	Per 50	Per 100
10-12 inch T	\$ 2.75	\$ 5.50	\$10.50	\$20.00
6-10 inch T	2.00	4.00	7.75	15.00

WHITE SPRUCE—Bluish-green foliage. Medium grower.

	Per 10	Per 25	Per 50	Per 100
10-12 inch T	\$ 2.00	\$ 4.00	\$ 7.50	\$14.00
6-10 inch T	1.75	3.75	6.50	12.00

PINES

AUSTRIAN PINE—Probably the best all around pine for this country. Green foliage.

	Per 10	Per 25	Per 50	Per 100
2-3 ft. T	\$ 4.50	\$ 9.50	\$18.00	\$35.00
18-24 inch T	4.00	8.50	16.00	30.00
12-18 inch T	2.50	5.00	8.50	16.00
10-12 inch T	2.00	4.00	7.00	13.00

BULL PINE—Long glaucous needles. Very hardy. Stands drought.

	Per 10	Per 25	Per 50	Per 100
18-24 inch T	\$ 3.25	\$ 7.00	\$13.00	\$24.00
12-18 inch T	2.00	4.50	8.25	16.00
10-12 inch T	1.50	3.50	6.50	12.00

WHITE PINE—The white pine is always admired for its tall growth and its soft foliage.

	Per 10	Per 25	Per 50	Per 100
2-3 ft. T	\$ 4.00	\$ 8.50	\$16.00	\$30.00
18-24 inch T	3.50	7.00	13.00	24.00
12-18 inch T	2.25	4.50	8.50	16.00
10-12 inch T	1.25	2.75	5.25	10.00

SCOTCH PINE—An eastern pine of shorter green foliage. Grows fast and does well in this territory.

	Per 10	Per 25	Per 50	Per 100
2-3 ft. T	\$ 4.50	\$ 9.50	\$18.00	\$35.00
18-24 inch T	4.00	8.50	16.00	30.00
12-18 inch T	2.00	4.50	8.25	16.00
10-12 inch T	1.25	2.75	5.25	10.00

JACK PINE—A fast growing tree. Easy to transplant. Foliage green.

	Per 10	Per 25	Per 50	Per 100
2-3 ft. T	\$ 4.00	\$ 8.50	\$16.00	\$30.00
18-24 inch T	3.25	7.00	13.00	24.00
12-18 inch T	2.25	4.50	8.00	15.00
10-12 inch T	1.25	2.75	5.25	10.00

FOREST TREE SEEDLINGS . . .

for Woodlot and Windbreak Plantings

You will be doing a patriotic duty if you will plant trees of the right kind for protection against windstorms, for quick fence posts, for fuel, lumber and wild life coverage. We recommend Chinese Elm backed up with Cedar or Pine for quick and lasting windbreak. Many other varieties are as good or better, but not as fast developing. FOR QUICK FENCE POSTS plant Black Locust. Other varieties are good, but not as fast. FOR QUICK FUEL plant Cottonwood and Maple. For better fuel plant Elm, Ash, Oaks, Honey Locust, Hackberry, etc. FOR LUMBER there are many varieties suitable, but Cottonwood is the fastest lumber if you select the type best suited for your locality. We have a special selected type that has proven to be outstanding. Elms are being made into lumber today right here in Nebraska. Do you know that Nebraska has nearly one thousand Sawmills and our timbers are diminishing rapidly?

Deciduous trees for windbreaks and timber lots, fence lines, lanes, etc. This kind of stock planted in rows on fence lines, and through cultivated field at intervals of 20 to 40 rods will pay greater dividends for the amount of money spent than any other improvement or operation that can be applied to cultivated fields.

Consult us for planting distances and varieties. Also ask your agricultural conservation committee about tree planting credits; it will pay you.

If sent by mail add 20c on less than \$2.00 orders. 10% on orders more than \$2.00. Otherwise we will ship best way, charges collect.

Variety	Per 50	Per 100	Per 200	Per 500	Variety	Per 50	Per 100	Per 200	Per 500
Ash Green—					Maple Soft—				
2-3 feet	\$ 3.25	\$ 6.00	\$11.50	\$28.00	2-3 feet	\$ 4.00	\$ 7.00	\$13.00	\$30.00
18-24 inches.....	2.50	4.50	9.25	20.00	18-24 inches.....	2.75	5.00	9.75	22.00
12-18 inches.....	1.60	3.00	5.75	14.00	12-18 inches.....	2.00	3.50	6.50	15.00
Cottonwood—					6-12 inches.....				
2-3 feet	1.50	2.75	5.00	11.00	1.35	2.25	4.25	10.00	
18-24 inches.....	1.10	2.00	3.50	8.50	Mulberry—				
Elm American—					2-3 feet				
2-3 feet	2.50	4.50	8.50	20.00	18-24 inches.....	2.75	5.00	9.75	22.00
18-24 inches.....	2.00	3.50	6.75	15.00	12-18 inches.....	2.00	3.50	6.50	15.00
12-18 inches.....	1.60	3.00	5.75	11.50	6-12 inches.....	1.25	2.25	4.25	10.00
6-12 inches.....	.85	1.50	2.85	7.00	Olive Russian—				
Elm Chinese—					3-4 feet				
5-6 feet	10.50	20.00	38.00	90.00	9.00	16.50	32.00	75.00	
4-5 feet	7.50	14.00	26.00	60.00	2-3 feet	6.00	11.00	21.00	50.00
3-4 feet	5.00	9.50	17.00	40.00	18-24 inches.....	4.25	8.00	15.00	35.00
2-3 feet	4.00	5.75	11.00	25.00	12-18 inches.....	3.25	6.00	11.00	25.00
18-24 inches.....	2.25	4.00	7.50	18.00	6-12 inches.....	2.25	4.00	7.50	18.00
12-18 inches.....	1.50	2.50	4.75	11.00					
6-12 inches.....	.85	1.50	2.85	7.00					
Hackberry—									
2-3 feet	4.25	8.00	15.00	35.00					
18-24 inches.....	3.25	6.00	11.00	25.00					
12-18 inches.....	2.25	4.00	7.50	18.00					
6-12 inches.....	1.50	2.75	5.00	12.00					
Locust Black—									
3-4 feet	4.00	7.50	14.50	35.00					
2-3 feet	3.00	5.50	10.50	25.00					
18-24 inches.....	2.25	4.00	7.75	18.00					
12-18 inches.....	1.75	3.00	5.50	13.50					
6-12 inches.....	1.35	2.25	4.25	10.00					
Locust Honey Thornless—									
3-4 feet	6.00	11.00	21.00	50.00					
2-3 feet	4.00	7.00	13.00	30.00					
18-24 inches.....	2.75	5.00	9.75	22.00					
12-18 inches.....	2.00	3.50	6.50	15.00					
6-12 inches.....	1.50	2.75	5.00	12.00					



WINDBREAK PLANTING

Plumfield Nurseries **EARLY BEARING DWARF APPLE and PEAR TREES**



Dwarf growing, young bearing fruit trees, are not new; they have been successfully grown in Europe for 200 years and in Eastern United States for 75 years. Are becoming more popular every year. They have many advantages in the small yard and garden, bear young, require less space, can be sprayed and pruned easily. The quality of the fruit is as good or better than fruit grown on standard stocks, and can be harvested without the use of tall ladders.

DWARF APPLE VARIETIES

SUMMER VARIETIES

Early McIntosh
Summer Delicious

FALL VARIETIES

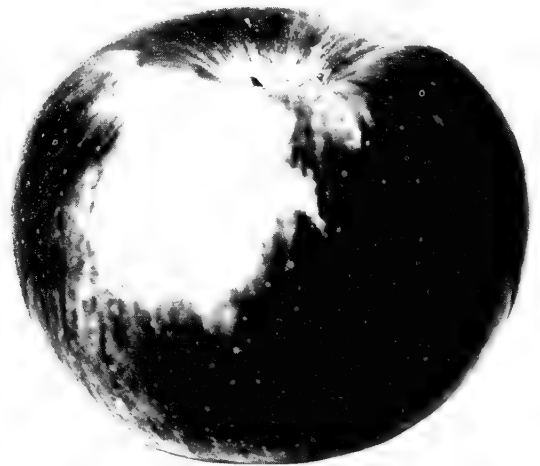
Fameuse
Wealthy

WINTER VARIETIES

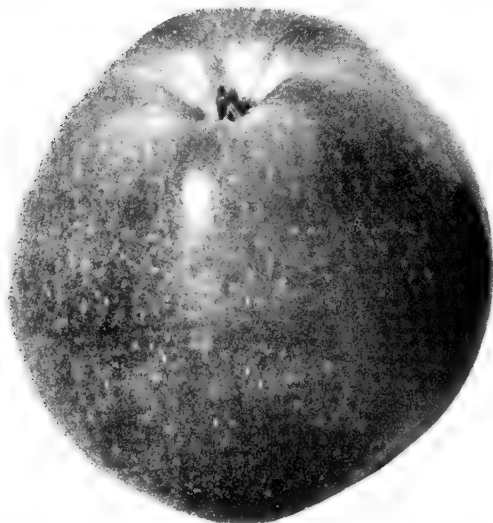
Jonathan
Red Delicious
Northern Spy
McIntosh (Black Micky)
Grimes Golden

DWARF PEAR VARIETIES

Duchess
Clapp's Favorite



WEALTHY



SUMMER DELICIOUS

For description of varieties, see page 14.

PRICES PER EACH

5/8 in. caliper, 3-4 ft.	\$2.50
1/2 in. caliper, 2 1/2-3 ft.	2.25
3/8 in. caliper, 2-2 1/2 ft.	2.00

For other varieties of fruits, see pages 13 to 17.

**Write Us for Varieties of Fruits Not Listed, as Space Does
Not Permit Us to List All Kinds.**

Plumfield Apples

	Each	Lots of 4 each	Lots of 8 each	Lots of 12 each
11/16 in. cal., 5-7 ft., select.....	\$1.15	\$1.13	\$1.10	\$1.08
9/16 in. cal., 4-6 ft., standard.....	1.00	.98	.96	.94
7/16 in. cal., 3-4 ft.....	.80	.78	.76	.74

THESE PRICES APPLY TO ALL VARIETIES OF APPLES AND CRAB APPLES AS LISTED BELOW.

SUMMER VARIETIES

ANOKA—July to August. This variety fruits very young. Red and yellow striped.

DUCHESS—August. An old variety, but still one of the best. A good cooking apple.

EARLY HARVEST—July. The earliest summer apple. Pale yellow fruit.

EARLY McINTOSH—Two weeks later than Yellow Transparent. Handsome red color and pleasing taste. Good quality.

RED DUCHESS—All red color. Season and quality same as Duchess.

RED JUNE—Late July. Medium size, round, deep red fruit.

YELLOW TRANSPARENT—July to August. Fruits quite young. Large clear yellow.

FALL VARIETIES

FAMEUSE or SNOW—August. Light red fruit; delicious flavor.

WEALTHY—Early September. One of the old standard varieties. Bears young and is very hardy.

WINTER VARIETIES

CORTLAND—Deep red. Good commercial variety. Comes into bearing young.

DARK RED JONATHAN—The new dark red Jonathan. Colors two to three weeks earlier than Jonathan, and a deeper red.

RED DELICIOUS—Solid red. One of the most popular apples. Fruit large, flesh white, tender and juicy.

GRIMES GOLDEN—Rich golden color. An extra good all-round apple.

HARALSON—Solid red. Fruit is of excellent quality, and a good keeper.

JONATHAN—Red. The best apple of all. Should be included in every planting.

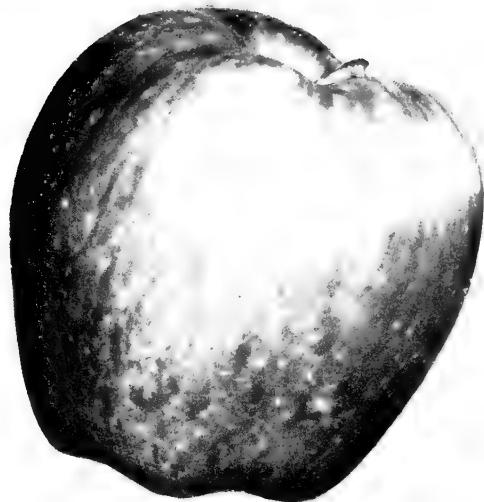
PRAIRIE SPY—Wealthy shape, color red over yellow ground. Ready for use about Christmas. Very good quality and keeper. This apple has great promise.

NORTHWESTERN GREENING—Yellowish green. Flesh crisp and juicy. Very hardy.

STAYMEN WINESAP—Deep red. Good commercial variety.

WINESAP—Crimson. A medium sized apple of fine flavor.

YELLOW DELICIOUS—Golden yellow. Sweet, spicy flavor.



SOLID RED DELICIOUS

One of the most used fruits in the world. Can be easily grown, and should be planted extensively. Varieties we are listing are of the best sorts and recommended for this locality. You may make a selection of varieties and obtain quantity prices on Apples.

DOLGO—Fiery red. Bears young and abundantly. Tree very ornamental.

WHITNEY—Light yellow striped red. Large fruit.

NEW VARIETIES

DELICIOUS CRAB

This Crab Apple was found on the Henry Lass farm near Scribner, Nebraska. Mr. Lass Planted a Delicious apple seed and obtained a Crab apple with Delicious aroma and flavor. This should be tops in a preserving and pickling Crab. We are offering these for the first time. Fruit is large, is greenish yellow with a red stripe and creamy white meat, solid flesh.

PACAL CRAB

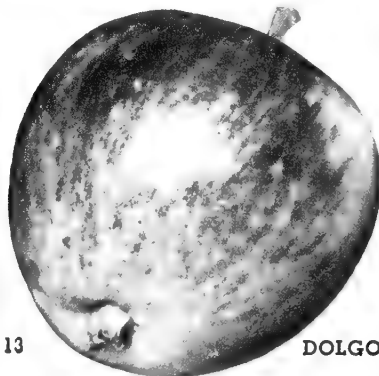
Another one of the Mr. John Pacal seedlings. Fruit brilliant red and of good size for a Crab apple. Flesh very solid. This is a good jelly and pickling Crab and we think it is worthy of space where Crab apples are desired. Bears abundantly. Orchardists who have seen these Pacal trees are very enthused with them.

PACAL SUMMER DELICIOUS

A new variety offered for the first time. Parent tree at Weston, Nebraska. Grown from a seed planted by Mr. John Pacal. This tree bore crops for the past several years, having survived the fall freeze of 1940, proving its hardiness. Apples of large size, red, slightly striped, very delicious flavor and aroma of the Delicious. Ripens in September. Bears quite young. Truly a fine apple.

PRICES PER EACH

11/16 in. caliper, 5-6 ft.....	\$2.00
9/16 in. caliper, 4-5 ft.....	1.75
7/16 in. caliper, 3-4 ft.....	1.50
Other varieties of fruits, see pages 13 to 17.	



DOLGO

Apricots

Apricots bloom early and many times are caught by frost. Heavy mulching after the ground freezes solid will retard their early blooming.

CHINESE—Yellow. Large fruit, and very hardy.

MOORPARK—Orange-yellow. Fruit large, with rich, sweet, flavor.

**SCOUT
APRICOT**

"MANCHURIAN APRICOTS." Professor Hansen's Hybrids, Brookings, South Dakota.

MANCHU—Large yellow blushed red. Crop very heavy. Hardy.

SCOUT APRICOT—A Morden Manitoba, Canada, production. Bears well. Fruit bronze gold color. Flesh yellow, freestone, tender, free of fibre and thin skinned. Very hardy.

	Each	Lots of 4 each
11/16 in caliper, 5-7 ft., select.....	\$2.00	\$1.95
9/16 in. caliper, 4-5 ft., standard.....	1.75	1.70
7/16 in. caliper, 3-4 ft.	1.50	1.45

Cherries

There is no fruit tree more profitable than the Cherry, especially the sour varieties, which are very desirable for pies and canning. They bear fruit very soon after planting and bring good returns on your investment. Cherries are easily raised, as they are adaptable to almost any kind of soil, and should be planted in large enough quantities to insure plenty of this desirable fruit for the family. You may select varieties and obtain quantity prices.

SOUR CHERRIES

	Each	Lots of 4 each
11/16 in. caliper, 5-6 ft., select.....	\$2.00	\$1.95
9/16 in. caliper, 4-5 ft., standard.....	1.75	1.70
7/16 in. caliper, 3-4 ft.	1.50	1.45

EARLY RICHMOND—Bright red. Earliest, and a good pie cherry.

ENGLISH MORELLO—Blackish red when fully ripe. Tart, but very rich for canning.

MONTMORENCY—Large, red. The best all-purpose cherry.

OSTEHEIM—Black when ripe. Red meat inside. Excellent for canning.

SWEET CHERRIES

BLACK TARTARIAN—A big purple-black sweet cherry of fine flavor. Very juicy.

BOHEMIAN SWEET CHERRY—Original tree came from Bohemia, was planted in Omaha, Nebr., where it bore its large luscious red fruit for many years. Tree is hardy, fruit larger than Montmorency; ripens some later.

YELLOW GLASS—Golden yellow. A hardy and productive sweet cherry

11/16 in. caliper, 5-6 ft., select.....	\$2.25	\$2.20
9/16 in. caliper, 4-5 ft., standard.....	2.00	1.95
7/16 in. caliper, 3-4 ft., standard.....	1.75	1.70



MONTMORENCY

Pears

BARTLETT (Summer)—Golden yellow, red cheek. Excellent flavor.

CLAPP'S FAVORITE (Summer)—Large pear. Excellent quality, smooth flesh. Hardy and bears young.

DOUGLAS (Winter)—The best winter pear. Hardy. Bears young and productive.

DUCHESS (Autumn)—Large greenish yellow. Flesh white. Excellent flavor. Hardy and productive.

FLEMISH BEAUTY (Autumn)—Large, beautiful, excellent quality, juicy. Hardy and productive.

	Each	Lots of 4 each
9/16 in. caliper, 4-6 ft., standard	\$1.75	\$1.70
7/10 in. caliper, 3-4 ft.	1.50	1.45



BARTLETT

**EASY TO
GROW**
Every home
should have a
few Pear trees

**Write Us for Varieties of Fruits Not Listed, as
Space Does Not Permit Us to List All Kinds.**

TREES *Fremont, Nebraska*

Plums

We wish to call your attention especially to the Hansen Hybrids and Minnesota Hybrids. These varieties will produce an abundance of high quality fruit. Usually bear the second year after planting. You should arrange to plant some of these. You may make a selection of varieties and obtain quantity prices.

	Each	Lots of 4 each
11/16 in. caliper, 5-7 ft., select	\$2.00	\$1.95
9/16 in. caliper, 4-5 ft., standard	1.75	1.70
7/16 in. caliper, 3-4 ft.	1.50	1.45

MINNESOTA HYBRIDS

GOLDEN ROD—August. Large, yellow. Very hardy and productive. Good quality.

MONITOR—August. Large. Red, very hardy and productive. High quality.

UNDERWOOD—August. Large, rich, red, rather oval and juicy. One of the best.

GOLDEN EMBER—August and September. Good canning. Large rich golden yellow. Good keeper. Very hardy and productive.

SUPERIOR—Ripens over a long period. Large red fruit, yellow flesh, juicy and sweet. We recommend this variety.

NATIVE VARIETIES

OMAHA—August. Large, red and sweet. Productive and valuable.

HANSEN HYBRIDS

COMPASS—August. Cherry-Plum. Small fruit, dark red when ripe.

HANSKA—August. Large red, apricot flavor. Very good quality.

KAHINTA—August. Large red, yellow flesh. Very productive. Good quality.

OPATA—July. Medium size. Fruit purplish-red, with green flesh.

SAPA—July. Medium size. Fruit purple with red flesh. Juicy and very good.

TOKA—August. Large, red and very desirable. Similar to Hanska.

WANETA—August. Large, red and very productive.

**We Solicit Your Inquiries
for Varieties Not Listed.**



WANETA PLUM

PRUNES

WEBER PRUNE—Hardy European Prune that bears heavy in this locality. Fruit large and excellent quality. 5-6 ft., \$2.00 each; 4-5 ft., \$1.75 each; 3-4 ft., \$1.50 each.

Peaches

Next to Apples, Peaches are used for more purposes than most other fruits. Peaches picked from your own orchard are the finest flavored and best. One crop of fruit pays the grower many, many times the original cost of the trees. Peach can be profitably used as fillers in Apple orchards. We carry a long list of varieties and are listing only a few of the most popular.

	Each	Lots of 4 each
11/16 in. caliper, 5-7 ft., select.....	\$1.75	\$1.70
9/16 in. caliper, 4-6 ft., standard.....	1.50	1.45
7/16 in. caliper, 3-4 ft.	1.25	1.20

CHAMPION—Early. White with brilliant red cheek. Freestone.

ELBERTA—Mid-season. Deep yellow with brilliant blush. Freestone.

GOLDEN JUBILEE—Early. Apricot yellow with blush. Freestone.

HEATH CLING—Late. Large white fruit. Cling.

HALE HAVEN—Mid-season. Orange yellow overspread with red. Freestone.

J. H. HALE—Mid-season. Yellow; almost free from fuzz. Freestone.

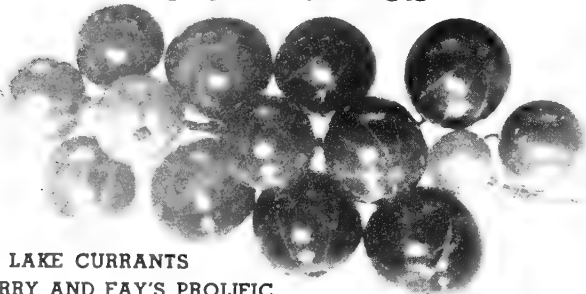
POLLY—Early. Creamy white with red blush. Freestone. Very hardy.



CHAMPION

Plumfield SMALL FRUITS

Currants



RED LAKE CURRANTS
CHERRY AND FAY'S PROLIFIC

CHERRY—Dark red fruit produced in short clusters. Good quality.

Two-year heavy \$0.50 Each—6 for \$2.60
One-year40 Each—6 for 2.00

PERFECTION—Bright red, extra large fruit. Good market variety.

Two-year heavy \$0.60 Each—6 for \$3.00
One-year50 Each—6 for 2.60

RED LAKE—From Minnesota Breeding Farm. Red, large berries. Very hardy. One of the best.

Two-year heavy \$0.60 Each—6 for \$3.00
One-year50 Each—6 for 2.60

Gooseberries



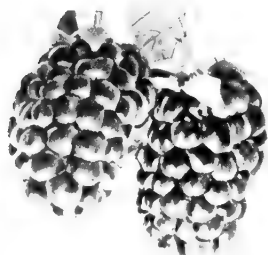
PEARL GOOSEBERRIES

HOUGHTON—Green turning pale red when ripe. Heavy producer.

Two-year heavy \$0.60 Each—6 for \$3.00
One-year50 Each—6 for 2.60

OREGON CHAMPION—Medium sized berries. One of the best varieties for pies.

Two-year heavy \$0.60 Each—6 for \$3.00
One-year50 Each—6 for 2.60



Boysenberries

BOYSENBERRY—Huge berries of sweet, delicious flavor. Almost seedless. Bears heavily over a long season.

Per 5	Per 10	Per 25
\$0.85	\$1.60	\$3.50

BOYSENBERRIES (Thornless).

Per 5	Per 10	Per 25
\$1.00	\$1.85	\$4.25

BETA—A small black grape. One of the hardiest varieties.

Two-year heavy—
\$0.50 Each—6 for \$2.60

One-year—
\$0.40 Each—6 for 2.00

CACO—Red. A new variety. Excellent for table use.

Two-year heavy—
\$0.60 Each—6 for \$3.00

One-year—
\$0.50 Each—6 for 2.60

CONCORD—The old reliable all-purpose grape. Black, hardy and very productive.

Two-year heavy—
\$0.35 Each—6 for \$1.90

One-year—
\$0.25 Each—6 for 1.25

MOORE'S EARLY—Blue-black. Popular home and market variety.

Two-year heavy—
\$0.50 Each—6 for \$2.60

One-year—
\$0.40 Each—6 for 2.00

NIAGARA—White. Large berries in compact bunches. Excellent for jelly or wine.

Two-year heavy \$0.50 Each—6 for \$2.60
One-year40 Each—6 for 2.00

WORDEN—Black. Similar to Concord, but ripens about ten days earlier.

Two-year heavy \$0.50 Each—6 for \$2.60
One-year40 Each—6 for 2.00

NEW VARIETIES

FREDONIA—A new early black, good producer of high quality. Ideal for home planting.

Two-year heavy \$0.50 Each—6 for \$2.60
One-year40 Each—6 for 2.00

SHERIDAN—Black fruit. Heavy bunches of delicious sweet fruit. You should plant some of this variety.

Two-year heavy \$0.60 Each—6 for \$3.00
One-year50 Each—6 for 2.60

For larger quantities, write for special prices.

Raspberries

Raspberries do well in most any soil. It is best to plant them where they are protected from the hot summer winds as they ripen in July. Raspberries are a very profitable crop.

CUMBERLAND—Black. One of the most reliable varieties, and widely planted.

5 for 80c; 10 for \$1.50; 25 for \$3.25; 50 for \$6.00.

CHIEF—Red. About ten days earlier than Latham; very productive.

5 for 80c; 10 for \$1.50; 25 for \$3.25; 50 for \$6.00.

LATHAM—Red. A fine fruit for home or market. Large fruit, bears heavily. 5 for 80c; 10 for \$1.50; 25 for \$3.25; 50 for \$6.00.

MORRISON BLACK RASPBERRY—This new raspberry is the largest ever grown. Has very few seeds. A vigorous grower and is rapidly gaining favor among berry growers.

5 for 95c; 10 for \$1.75; 25 for \$3.75; 50 for \$7.50.

SODUS PURPLE RASPBERRY—This is the heaviest bearing of all the raspberries. Does well in the midwest and produced a good crop when many other varieties failed. Upright grower and produces large berries. This variety should not be overlooked as it is an all around berry and has a delicious flavor.

5 for 95c; 10 for \$1.75; 25 for \$3.75; 50 for \$7.50

Grapes



CONCORD



LATHAM RASPBERRIES

Plumfield SMALL FRUITS . . Continued



Blackberries

SNYDER AND ELDORADO—These are the hardiest and a favorite with fruit growers. Will stand cold winters and are good market varieties. Fruit medium to large. No. 1 root cutting plants.

Per 5	Per 10	Per 25
\$0.75	\$1.35	\$3.25

Rhubarb or Pie-Plant



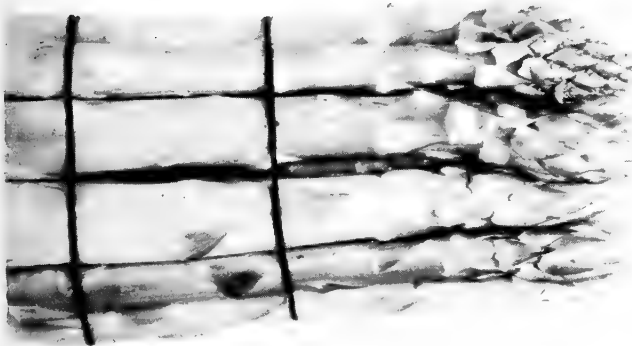
RHUBARB—VICTORIA

	Per 3	Per 10	Per 25
Large, 2-year roots	\$0.50	\$1.50	\$3.50

McDONALD'S CHERRY—Originated in Canada. Grows 3 feet tall, nearly seedless. Fine sweet flavor and most beautiful sauce. Can pick all summer. **65c each; 3 for \$1.85.**

RUBY RED—Seedless. Red all the way through. Extra fine flavor, and very beautiful red sauce. Can be picked all summer. **65c each; 3 for \$1.85.**

Asparagus



MARTHA WASHINGTON—Rustproof. This is undoubtedly the best Asparagus grown. Plant so that crowns will be about four inches deep in the ground, enabling you to cut the stalks below the ground. For best results plant two-year, heavy plants.

Per 10	Per 25	Per 50	Per 100
\$0.50	\$1.10	\$2.00	\$3.50

NEW PARADISE ASPARAGUS—Superior quality. Produces much faster. We recommend this variety.

Per 10	Per 25	Per 50	Per 100
\$0.60	\$1.25	\$2.25	\$4.00

Strawberries



MASTODON

Home-Grown JUNE-BEARING STRAWBERRIES

SENATOR DUNLAP—The best strawberry for home use. Large, well shaped berries of delicious flavor. Prices on above:

Per 25	Per 50	Per 100	Per 200
\$0.65	\$1.15	\$2.00	\$3.75

PREMIER—Early, resistant to frost. Berries are large and run uniform in size.

Prices on Premier:

Per 25	Per 50	Per 100	Per 200
\$0.75	\$1.40	\$2.50	\$4.50

EVERBEARING STRAWBERRIES

GEM—Large, firm, deep red fruit. A good commercial variety.

MASTODON—A leading Everbearing variety. Large fruit, productive.

Per 25	Per 50	Per 100	Per 200
\$0.85	\$1.60	\$3.00	\$5.50

BRUNES MARVEL—(NEW). A new Minnesota variety. Everbearing. Produces fruit early in spring and bears late in fall until frost. A large berry, very sweet and stands drouth better than most other varieties. Very strong grower.

Per 25	Per 50	Per 100	Per 200
\$1.50	\$2.50	\$4.50	\$8.50

Horseradish

Plant a few crowns or cuttings and grow your own. Crowns will produce the first year.

	Per 3	Per 10	Per 25	Per 100
Crowns	\$0.60	\$1.75	\$4.00	\$15.00

We Solicit Your Inquiries for Varieties Not Listed.



ONE OF OUR WELL PLANTED HOMES

Plumfield SHRUBS

Beautify your home and add value to your property. The grades of shrubs that we are listing are standard grades, and are good strong plants, well branched. We have a complete assortment, and invite you to come to our storage and select your stock.



FLOWERING ALMOND

Tall Growing Shrubs

- Beauty Bush
- †Dogwoods
- †Elders
- †Forsythias
- †Honeysuckles
- Lilacs
- *Mock-orange
- Sumacs
- Snowball
- †Cranberry Bush
- Tamarix
- Golden Leaf Ninebark

(*Shrubs suitable for shady place)

(†Shrubs with attractive berries)

Medium Height Shrubs

- Flowering Quince
- †Cotoneaster
- *Hydrangea
- Rhodotypos
- †Golden Currants
- Sorbaria
- Spirea Arguta
- Spirea Billardi
- Spirea Prunifolia
- *Spirea Van Houtte
- Weigelas

Dwarf Growing Shrubs

- †Barberry
- Golden Mock Orange
- Potentilla Fruticosa
- Spirea Anthony Waterer
- Spirea Froebelli
- Spirea Callosa Alba
- Spirea Thunbergi
- †Snowberry, White
- †Snowberry, Red

ALMONDS (Pink or White)—A dwarf early flowering shrub. Branches covered with beautiful rose-colored flowers.

18-24 in. \$0.75 2-3 ft. \$0.90

BARBERRY (Red Leaved)—Red foliage, with red berries in the winter. Must be planted in the sun in order to bring out the color of the foliage.

12-15 in. \$0.45 15-18 in. \$0.60
18-24 in.75

BARBERRY THUNBERGI—Green leaved. A useful shrub for border and foundation planting. Leaves change to brilliant crimson scarlet and gold in the fall and red berries remain almost all winter.

12-15 in. \$0.30 15-18 in. \$0.40
18-24 in.50

BEAUTY BUSH—Blossoms in early summer. Long arching branches covered with clusters of pale pink trumpet-shaped flowers.

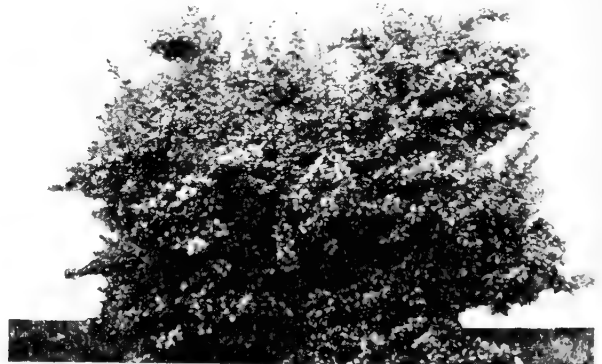
18-24 in. \$0.90 2-3 ft. \$1.10

BUTTERFLY BUSH (Ile de France)—A perennial shrub dying to the ground in winter. Producing large flowers of rich reddish purple in long panicles.

No. 1. \$0.60 3 for \$1.60

BUTTERFLY BUSH (Charming)—A new patented variety. Long sprays of lavender-pink blooms which are quite pink compared with other varieties of Butterfly Bush.

No. 1. \$0.60 3 for \$1.60



THUNBERGI BARBERRY

Flowering SHRUBS

DOGWOOD (Goldentwig)—Yellow branches and canes. Small white flowers followed by silver berries.

2-3 ft.....\$0.65 3-4 ft.....\$0.80

DOGWOOD (Red Bark)—A favorite shrub because of the red bark on twigs and canes during the winter. Silver berries.

12-18 in.....\$0.35 2-3 ft.....\$0.65

18-24 in......50 3-4 ft......80

ELDER (Golden Leaved)—Bright yellow foliage throughout the summer. The berries attract the birds.

2-3 ft.....\$0.65 3-4 ft.....\$0.80

EUONYMUS, Alatus, Winged (Japanese Spindle Tree)—Yellow flowers, May-June. Interesting corky bark, leaves turning brilliant crimson in autumn, with bright red berries.

2-3 ft.....\$1.25

EUONYMUS, atropurpureus, Wahoo—12-15 ft. Native, hardy, vigorous shrub or small tree producing an abundance of scarlet berries. Attractive colored foliage in autumn.

2-3 ft.....\$0.65



FORSYTHIA

FORSYTHIA or GOLDEN BELL (Intermedia)—Early blooming shrub of a spreading habit of growth. Very free blooming.

18-24 in.....\$0.50 2-3 ft.....\$0.65

3-4 ft......80

FORSYTHIA FORTUNEI—Upright, tall-growing shrub. Branches arching and bearing clusters of golden yellow blossoms.

2-3 ft.....\$0.65 3-4 ft.....\$0.80

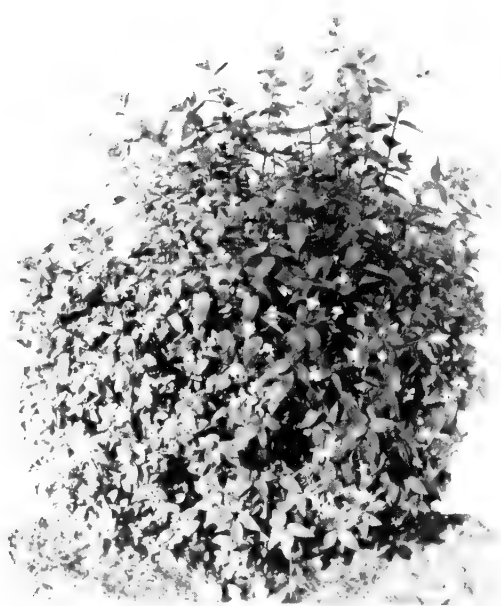
HONEYSUCKLE BELLA ALBIDA—Spreading shrub with large leaves and producing an abundance of white, fragrant flowers in spring. Red berries.

2-3 ft.....\$0.65 3-4 ft.....\$0.80

HONEYSUCKLE PINK TARTARIAN—Planted extensively, bearing heavily with pink blossoms, and producing large quantities of scarlet berries.

18-24 in.....\$0.50 2-3 ft.....\$0.65

3-4 ft......80



HONEYSUCKLE BUSH

HONEYSUCKLE RED TARTARIAN—The most extensively used Bush Honeysuckle. Blooms freely and carries loads of bright red berries in midsummer.

18-24 in.....\$0.50 2-3 ft.....\$0.65

3-4 ft......80



HYDRANGEA P. G.

HYDRANGEA PANICULATA GRANDIFLORA—Large showy panicles of creamy white flowers changing to rose, then purple and bronze. Blooms late summer.

12-18 in.....\$0.60 18-24 in.....\$0.75

2-3 ft.....1.00

HYDRANGEA ARBORESCENS GRANDIFLORA—Blooms in midsummer. Blossoms resemble huge snowballs.

12-18 in.....\$0.75 18-24 in.....\$0.90

2-3 ft.....1.10

FLOWERING QUINCE (Cydonia Japonica)—Scarlet flowers appear before the leaves. A very popular shrub.

12-18 in.....\$0.40 18-24 in.....\$0.50

2-3 ft......65

Plumfield Flowering SHRUBS...Cont'd



LILAC

LILAC PURPLE (Old Fashioned Lilac)—Purple blossoms in April and May.

18-24 in.....\$0.50 2-3 ft.....\$0.65

LILAC ROTHOMAGENSIS (Chinese)—A tall growing shrub with slender, arching branches producing purplish-red flowers.

18-24 in.....\$0.60 2-3 ft.....\$0.75
3-4 ft.....1.00

LILAC PERSIAN—Similar to Rothomagensis, except that the flowers are more nearly red.

18-24 in.....\$0.60 2-3 ft.....\$0.75
3-4 ft.....1.00

PHILADELPHUS CORONARIUS (Sweet Mock Orange)—Tall growing, producing a profusion of large white, fragrant blossoms. Blooms in late spring.

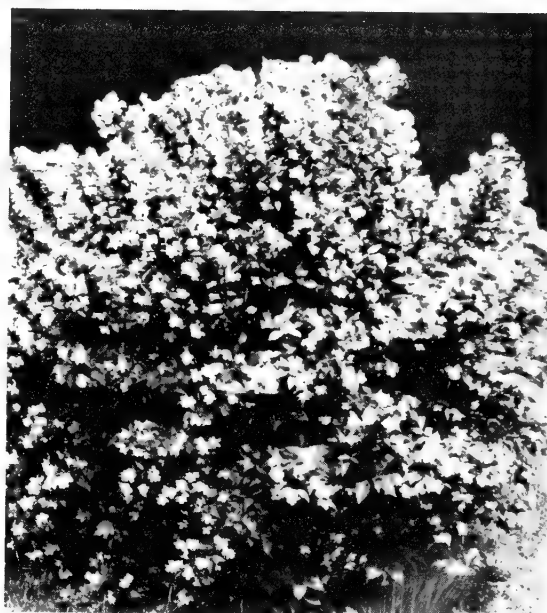
2-3 ft.....\$0.65 3-4 ft. heavy......80

PHILADELPHUS GLACIER—Large, white flowers, very double, sweet scented. Shrub hardy, symmetrical and compact. Leaves bluish green. Does not grow as fast as standard varieties of Philadelphus, therefore more desirable for average garden or lawn.

18-24 in.....\$0.65 2-3 ft.....\$0.75
3-4 ft. heavy.....1.15



SPIREA ANTHONY WATERER



PHILADELPHUS GLACIER

PHILADELPHUS, LEMOINE MOCKORANGE. 4-5 ft.—Semi-dwarf with attractive foliage, producing dense racemes of small fragrant white flowers.

12-18 in.....\$0.40 18-24 in.....\$0.60
2-3 ft......75

PHILADELPHUS VIRGINAL—Showy white, semi-double blossoms produced over a long season, beginning in May.

12-18 in.....\$0.60 18-24 in.....\$0.75
2-3 ft.....1.00

PRIVET, AMUR RIVER—See Hedging.

SNOWBALL—See Viburnum Opulus Sterilis.

SPIREA ANTHONY WATERER—A popular low-growing shrub, in bloom constantly all summer. Large, flat clusters of deep rose colored blossoms.

12-18 in.....\$0.50 15-18 in.....\$0.60
18-24 in. heavy......75

SPIREA ARGUTA (Garland Spirea)—Upright growing shrub. Covered with small white flowers in early spring, before the leaves appear.

12-18 in.....\$0.40 18-24 in.....\$0.50
2-3 ft. heavy......65

SPIREA BILLARDI (Billard's Spirea)—Long feathery plumes of dainty pink. Blooms in mid-summer.

18-24 in.....\$0.50 2-3 ft.....\$0.65
3-4 ft. heavy......80

SPIREA FROEBELI (Froebel's Spirea)—Dwarf, vigorous grower. Young foliage tinged red, flowers rose color.

12-18 in.....\$0.45 18-24 in.....\$0.60
2-3 ft. heavy......75

SPIREA THUNBERGI—Graceful early flowering shrub. Pure white flowers, bright green feathery foliage.

18-24 in.....\$0.50 2-3 ft. heavy.....\$0.65

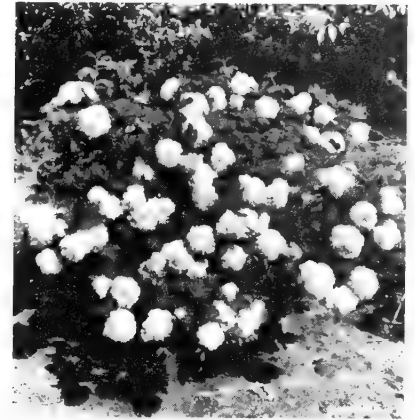
Plumfield Flowering SHRUBS...Cont'd



SPIREA VANHOUTTE



HIGH BUSH CRANBERRY



SNOWBALL

SPIREA VANHOUTTE—The most popular of all the Spireas. Arching branches covered with white blossoms, in spring.
 12-18 in.....\$0.25 2-3 ft.\$0.45
 18-24 in......35 3-4 ft. heavy......60

SYMPHORICARPUS RACEMOSUS (White Snowberry)—Pink flowers in mid-summer, followed by large berries of snow white color.
 2-3 ft. heavy.....\$0.60

SYMPHORICARPUS VULGARIS or CORALBERRY (Red Snowberry)—Dwarf native shrub. Loaded with red berries that remain on the branches all winter.
 18-24 in.....\$0.45 2-3 ft. heavy.....\$0.60

VIBURNUM OPULUS (Cranberry Bush)—Single white flowers in spring, followed by red berries that hang on almost all winter.
 18-24 in.....\$0.65 2-3 ft. heavy.....\$0.75

VIBURNUM OPULUS STERILIS (Snowberry)—One of the best loved of spring flowering shrubs. Large ball-like clusters of flowers. Does not produce fruits or seeds.
 12-18 in.....\$0.60 18-24 in.....\$0.75
 2-3 ft. heavy.....1.00

TAMARIX HISPIDA (Kashagar Tamarix)—Soft, feathery silver foliage. Bright pink flowers freely produced.
 18-24 in.....\$0.50 2-3 ft.\$0.65
 3-4 ft. heavy......75

HEDGING

A well cared for hedge brings to your home that distinguishing touch of beauty and dignity. Formal hedges, such as Privet, should be pruned often throughout the summer.



Use the taller-growing Hedging shrubs to transform your back yard into an Outdoor Living-room with walls of living green. The tall hedge will give you privacy.

AMUR RIVER PRIVET

This is a lighter grade of stock than our standard grades but it is young, healthy stock and will do well.

PRIVET, ARMUR RIVER—These are used almost exclusively for hedges.

	Per 10	Per 25	Per 100
12-18 inch light	\$1.50	\$3.00	\$11.00
12-18 inch heavy	1.75	3.35	13.00
18-24 inch	2.00	4.00	15.00

BARBERRY, THUNBERGI—Two-year-old seedlings.

	Per 10	Per 25	Per 100
9-12 inch	\$1.00	\$2.25	\$ 8.00
12-18 inch	1.50	3.00	11.00

HONEYSUCKLE—Makes a good tall hedge.

	Per 10	Per 25	Per 100
12-18 inch	\$2.00	\$4.00	\$15.00
18-24 inch	2.50	5.50	20.00

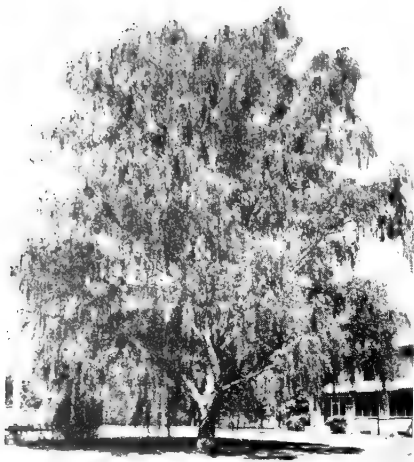
MULBERRY—(See Seedlings, page 11.)

SPIREA VANHOUTTE (Bridal Wreath)—Makes a nice hedge when trimmed.

	Per 10	Per 25	Per 100
10-15 inch	\$1.50	\$3.50	\$12.50
12-18 inch	2.00	4.50	16.00
18-24 inch	2.50	5.50	20.00

Plumfield SHADE

Plumfield shade and ornamental trees are first-class, well shaped, young and vigorous. Grown in soil that specially develops fibrous roots, which insures good results. All grades are based on standardized grades, where caliper and height are both important.



CUTLEAF WEEPING WHITE BIRCH

BIRCH, CUT LEAF WEEPING—A tall white-barked tree with gracefully drooping branches. Leaves deeply cut.

5-6 ft.	\$3.00
6-8 ft.	4.00
8-10 ft.	5.50

BIRCH, COMMON WHITE—Upright grower. Bark very white in mature trees.

6-8 ft.	\$2.00
8-10 ft.	2.75

ASH, AMERICAN GREEN—Tall growing tree. Foliage dark green, changing to gorgeous shades of purple and yellow in fall.

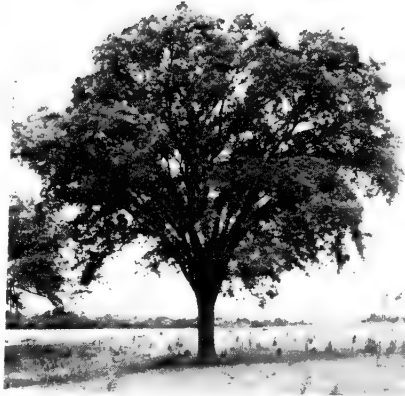
5-6 ft.	\$1.00
6-8 ft.	1.40
8-10 ft.	2.00



MOLINE ELM

The Moline Elm is a budded tree and is recommended for street and yard plantings where uniform trees are desired. Habit of growth is pyramidal. Very attractive large, waxy green leaves.

5-6 ft.	\$1.50
6-8 ft.	2.00
8-10 ft.	2.50
10-12 ft.	3.25



AMERICAN ELM

ELM, AMERICAN WHITE—The grandest of all trees for this region. Tall wide-spreading tops.

5-6 ft.	\$1.00
6-8 ft.	1.40

ELM, CHINESE—A rapid growing tree with slender branches covered with dark green foliage. Does well in dry territory. Prices listed here are for transplanted trees.

4-5 ft.	\$0.50
5-6 ft.75
6-8 ft.	1.00
8-10 ft.	1.40

ELM, VASE—A budded form of Elm, with graceful vase shape. Good for landscape and street planting.

10-12 ft.	\$3.25
----------------	--------



REDMOND LINDEN



HACKBERRY

HACKBERRY—Grows into a large tree, with luxuriant foliage. Limbs are seldom broken by wind.

5-6 ft.	\$1.00
6-8 ft.	1.50
8-10 ft.	2.00
10-12 ft.	3.00

LINDEN, AMERICAN (Basswood)—A tree of beautiful form and size, good for street or lawn planting. Fragrant, yellow flowers affording nectar for bees.

5-6 ft.	\$1.35
6-8 ft.	2.00
8-10 ft.	2.75
10-12 ft.	4.00

REDMOND LINDEN, Grafted tree, Crimean Basswood—Has an exceptionally straight trunk with branches growing close together on the trunk, making it very compact. Is a beautiful lawn or street tree.

5-6 ft.	\$1.75
6-8 ft.	2.50
8-10 ft.	3.25
10-12 ft.	4.50

We Invite You to Visit Our Nurseries and Sales Grounds.

TREES Fremont, Nebraska

Grown in nursery rows, root pruned, transplanted and spaced to insure best root system and specimen trees.

Where caliper grades are shown, as 1 inch, 2 inch, 3 inch, etc., it means the diameter six inches above the ground.



HARD MAPLE

DECIDUOUS TREES WINDBREAKS

You will find varieties and prices listed on page 11.

LOCUST, THORNLESS HONEY—Same as Honey Locust but thornless. Makes a very good street or shade tree.

5-6 ft.	\$1.35
6-8 ft.	2.00
8-10 ft.	2.75

MAPLE, NORWAY—A round topped tree of beautiful appearance. Foliage of deep, rich green.

6-8 ft.	\$2.50
8-10 ft.	3.50

MAPLE, SCHWEDLER (Schwedleri) (Purple Leaf Maple)—40-50 ft. A perfectly shaped tree. Gleaming red and purple in spring. Purplish-green in mid-summer and in autumn golden yellow.

5-6 ft.	\$3.00
6-8 ft.	4.00

MAPLE, SILVER (Soft Maple)—The fastest growing and largest of the maples. Leaves are silver underneath.

5-6 ft.	\$1.00
6-8 ft.	1.25
8-10 ft.	2.00
10-12 ft.	2.50

MAPLE, SUGAR (Hard Maple)—Tall stately trees of great beauty. Foliage turns to brilliant shades of yellow, orange and scarlet in autumn.

6-8 ft.	\$3.50
8-10 ft.	4.50
1 1/4-inch caliper.	5.25
1 1/2-inch caliper.	6.50

OAK, BUR (Quercus Macrocarpa)—Well known in Nebraska and Iowa. A very hardy rugged tree.

5-6 ft.	\$2.00
6-8 ft.	3.00
8-10 ft.	4.00

OAK, PIN—Tall, pyramidal shape. Foliage glossy green, becoming brilliantly colored in autumn.

5-6 ft.	\$2.00
6-8 ft.	3.00
8-10 ft.	4.00

OAK, RED (Quercus rubra.) 60-80 ft.—An excellent tree for park and street planting. Beautiful foliage turning red in autumn.

5-6 ft.	\$2.00
6-8 ft.	3.00
8-10 ft.	4.00



PIN OAK

RUSSIAN OLIVE—Attractive, silvery gray leaves and grayish-white berries. Used frequently for hedges and windbreaks.

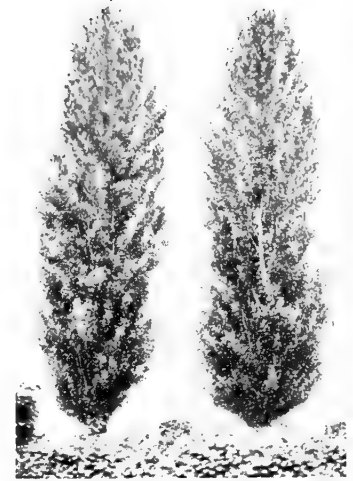
5-6 ft.	\$1.50
6-8 ft.	2.00

WILD BLACK CHERRY (Serotina)—40-50 ft. A native of the Middle West. White flowers in May followed by small black cherries borne in clusters.

6-8 ft.	\$1.50
8-10 ft.	2.25
10-12 ft.	3.00

BLACK WALNUT—A valuable tree for wood, lumber and nuts.

6-8 ft.	\$2.50
8-10 ft.	3.00



LOMBARDY POPLAR

POPLAR, LOMBARDY (2 Year)—A tall, pyramidal tree, limbs from the ground up. Fine for screens, and does not seed.

5-6 ft.	\$0.60
6-8 ft.75
8-10 ft.	1.00
10-12 ft.	1.35

POPLAR, YELLOW COTTONWOOD—A fast growing tree, and very hardy. Useful for windbreaks and shelter belts. Excellent lumber tree.

5-6 ft.	\$0.60
6-8 ft.75

SILVER WHITE POPLAR—Well known as Silver Poplar, spreading habit, leaves woolly white underneath, very hardy, succeeds in cold dry climate.

6-8 ft.	\$1.25
8-10 ft.	1.75



NIOBE WEeping WILLOW

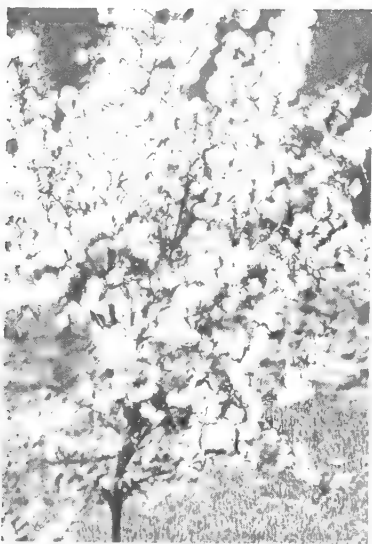
WILLOW, NIOBE WEeping—Bark on twigs and branches of a golden yellow color, giving the tree a handsome appearance both winter and summer.

3-4 ft.	\$0.50
4-5 ft.75
5-6 ft.	1.00
6-8 ft.	1.50
8-10 ft.	2.25

WILLOW, PUSSY—Small tree, with catkins on the branches in early spring.

18-24 in.	\$0.50
2-3 ft.65
3-4 ft.80

Plumfield Ornamental Flowering Trees



PRUNUS TRILOBA

PRUNUS TRILOBA (Flowering Plum)—A profusion of handsome, double pink flowers. Vigorous shrub or small tree.
 2-3 ft. **\$1.25**
 3-4 ft. **1.50**

PRUNUS, CISTENA (Hansen's Purple Leaved Plum)—Dwarf grower, with rich purple-red foliage. Pink flowers and purple fruit.
 18-24 in. **\$1.00**
 2-3 ft. **1.25**
 3-4 ft. **1.50**

PRUNUS, MINNESOTA PURPLE—A hardy, purple leaved tree. Its rich, purplish-red foliage makes it a desirable tree. We grow it in bush form. Pink flowers and purple fruit.
 18-24 in. **\$1.00**
 2-3 ft. **1.25**
 3-4 ft. **1.50**

CRAB, BECHTEL'S DOUBLE FLOWERING—Profuse bloomer. Flowers very double, dainty pink and exceedingly fragrant.
 18-24 in. **\$1.00**
 2-3 ft. **1.25**
 3-4 ft. **1.50**

CRAB, HOPA (Red Flowering)—An upright growing tree with beautiful foliage. Loaded with rose-colored flowers in April. Fruit is red inside and out, and hangs on until late autumn. Hardy and free from disease.
 3-4 ft. **\$1.00**
 4-5 ft. **1.25**
 5-6 ft. **1.50**
 6-8 ft. **1.75**

CRAB, RED SILVER. 18-20 ft.—Fruit rich maroon red, foliage somewhat cut-leaved with silver and red color. A remarkable combination.
 3-4 ft. **\$1.25**
 4-5 ft. **1.50**
 5-6 ft. **2.00**



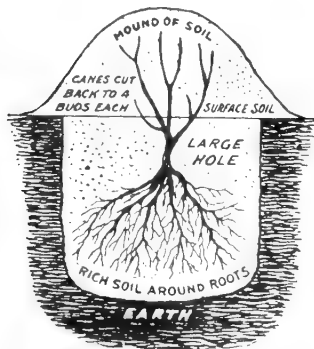
FLOWERING CRAB

BUCKEYE, COMMON—A tree that has long, slim, smooth leaves and greenish-yellow flowers followed by prickly burs that contain the buckeye in the fall.
 4-5 ft. **\$2.00**
 5-6 ft. **2.50**
 6-8 ft. **3.25**

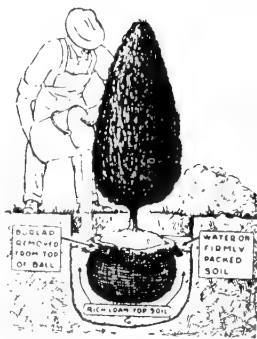
RED BUD—Small native tree. Pinkish red flowers appear in spring before the leaves.
 18-24 in. **\$0.60**
 2-3 ft. **.85**
 3-4 ft. **1.25**

HOW TO PLANT

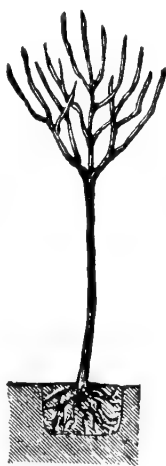
In planting in yard, garden, or field, the ground should be well prepared, and stock should be handled with least possible exposure. We offer the following suggestions on some of the more important plants.



How to Plant Roses



How to Plant Balled Evergreens



Wrong Way



Right Way

To determine the number of plants required per acre for any distance multiply the two plant distances and divide the product into 43,560 (the number of square feet per acre).

PLANTING DISTANCE OF FRUIT TREES

	Usual recommended distance	Best average distance	Number Per acre at average distance		Usual recommended distance	Best average distance	Number Per acre at average distance
Apple	25 to 32 feet	30x30 feet	48	Blackberry	1 1/2 to 3x7 feet	2x7 feet	3110
Plum and Apricots	16 to 22 feet	20x20 feet	108	Gooseberry	4x6 feet	4x6 feet	1815
Pear	22 to 30 feet	25x25 feet	69	Currant	4x6 feet	4x6 feet	1815
Cherries and Peaches	12 to 16 feet	14x14 feet	147	Grape	8x8 feet	8x8 feet	680
Raspberry—(Hill)	4x6 or 5x5 feet	4x 6 feet	1815	Strawberry—			
(Hedge)	1 1/2 x 3 by 6 to 7 feet	2x 6 feet	3630	Everbearing	15 to 18 in. x 3 to 4 ft.	1 1/2 x 3 feet	9680
				June bearing	18 to 24 in. x 4 ft.	2x4 feet	5445

Plumfield VINES



CLEMATIS PANICULATA

Plant
Hardy
Climbing
Vines
to Make
Your
Home
Inviting



HONEYSUCKLE VINE

CLEMATIS PANICULATA (Sweet scented Clematis)—Small fragrant white flowers freely produced in autumn.
2 year.....\$0.60 2 year heavy.....\$0.75
Large Flowering Clematis should be grown on trellises.

CLEMATIS HENRYI—Large white flowers.
Dormant Pot Plants.....\$1.00

CLEMATIS JACKMANI—Large purple flowers.
Dormant Pot Plants.....\$1.00

CLEMATIS MME. ED. ANDRE—Large red flowers.
Dormant Pot Plants.....\$1.00

CLEMATIS RAMONA—Large light blue flowers.
Dormant Pot Plants.....\$1.00

BIGNONIA RADICANS (Trumpet Vine)—A strong growing, hardy vine, good for pillars and fences. Large trumpet-shaped flowers, loved by humming birds.
2 year old.....\$0.45 3 year old.....\$0.60

CELESTRUS SCANDENS (Bittersweet)—A native twining vine. Large clusters of berries in fall, with orange husks and bright red berries.
2 year old.....\$0.45 3 year old.....\$0.60

AMPELOPSIS VEITCHII (Boston Ivy)—A graceful vine that clings tightly to stone or brick walls. Does best on the east or north. Glossy, three-lobed leaves.
2 year old.....\$0.60 3 year old.....\$0.75

AMPELOPSIS ENGELMANI (Engelman's Creeper)—A vigorous growing, clinging vine. Very hardy. Brilliant fall coloring.
2 year old.....\$0.45 3 year old.....\$0.60

WISTARIA AMERICAN (Frutescens)—Long clusters of lilac purple flowers in June and July. Much used on arbors and trellises.
2 year old.....\$0.45 3 year old.....\$0.60

HONEYSUCKLE HALLEANA—White blossoms fading to a deep yellow, produced in profusion over a long blooming season. Very fragrant.
2 year.....\$0.35 3 year.....\$0.50

HONEYSUCKLE, Lonicera (Gold Flame)—Everblooming honeysuckle, blooming from early summer until killing frost. Showy, tubular flowers with recurving petals flame red outside, bright yellow inside. Very fragrant and hardy.
2 year.....\$0.85

HECKROTTI—Everblooming trumpet-shaped flowers. Fragrant, bright red outside, yellow inside. Hardy.
2 year.....\$0.85

HONEYSUCKLE SEMPERVIRENS (Scarlet Trumpet)—Foliage of deep, bluish green. Flowers are scarlet, freely produced.
2 year.....\$0.45



SILVER LACE VINE

POLYGONUM AUBERTI (China Fleecevine or Lace Vine)—Large feathery sprays of creamy white flowers produced in late summer and fall. Rapid grower.
2 year.....\$0.60 3 year.....\$0.75

We Solicit Your Inquiries for Varieties Not Listed.

Plumfield ROSES

HYBRID TEA ROSES



PINK RADIANCE



PINK DAWN



PICTURE

Roses are scarce this year and will be for some time. Therefore we suggest that you place your order early as the supply will not take care of the demand. When our present supply is exhausted we will not be able to replenish and would appreciate your listing substitute varieties in the event we do not have all the varieties you desire. While our list of varieties is small in comparison to the many varieties offered on the market today, we feel certain what we do list will serve you best in this territory.

Plumfield's hardy 2-year-old field grown roses will bloom the same year they are planted.

	Each	Per 3	Per 12
2-year heavy selected plants.....	\$1.25	\$3.50	\$13.00
2-year standard plants.....	1.00	2.90	10.00

RED SHADES

- AMI QUINARD**—Tall, vigorous and profuse. One of the darkest red.
- MARGARET McGREDDY**—Oriental red, shading to carmine rose.
- GRUSS AN TEPLITZ**—Vivid, fiery crimson, sweetly fragrant.
- GLOWING CARMINE**—Carmine, strong grower; blooms freely.
- E. G. HILL**—Dazzling scarlet, shading to a deeper pure red.
- ETOILE DE HOLLANDE**—Bright, dark red, deliciously perfumed.
- GRENOBLE**—Long-stemmed, beautifully shaped blooms of scarlet-crimson.
- McGREDDY'S SCARLET**—Brilliant scarlet shaded rose-pink; vigorous.
- RADIANCE, RED**—Bright rose red form of Radiance.
- SOUTHPORT**—Brilliant, unshaded, scarlet with fine tea scent.
- SYRACUSE**—A very vigorous upright grower. Scarlet crimson.

PINK SHADES

- DAME EDITH HELEN**—Pure glowing pink, fragrant.
- EDITOR McFARLAND**—Shapely buds and double brilliant pink blooms.
- BETTY UPRICHARD**—Delicate salmon pink shaded with coppery orange.
- BRIARCLIFF**—Brilliant pink, long bud.
- LEONARD BARRON**—Large full blooms of buff pink suffused gold; hardy.
- PICTURE**—Warm pink, undertones of salmon; strong and vigorous.
- PINK DAWN**—Perfectly formed, deep rose pink, toned orange.

- RADIANCE, PINK**—Rosy carmine pink, large, beautiful form.
- MRS. CHAS. BELL**—Soft, salmon-pink, sweetly perfumed.

WHITE SHADES

- K. A. VIKTORIA**—White, faintly suffused lemon.
- CALEDONIA**—Large, double white, borne singly on long, strong stems.

YELLOW SHADES

- MRS. PIERRE S. du PONT**—Bud reddish gold, flower deep golden yellow becoming lighter with age.
- MRS. E. P. THOM**—Rich lemon yellow, sweetly scented.
- McGREDDY'S YELLOW**—Bright buttercup yellow; perfect form; vigorous.
- LADY HILLINGDON**—Deep apricot yellow, large flowers.
- JOANNA HILL**—Clear yellow, deepening at the center.
- SUNBURST**—Orange copper-shaded golden yellow.
- SOUER THERESE**—Very vigorous, upright, profuse; double rich yellow.

TWO-TONED SHADES

- CONDESA de SASTAGO**—Deep coppery-pink inside, golden yellow reverse.
- MRS. SAM McGREDDY**—Large double flowers, pointed buds, scarlet-copper-orange. Fragrant.
- TALISMAN**—A combination of shadings of gold, apricot, yellow, and deep pink.
- EDITH NELLIE PERKINS**—Cream and blush shaded orange outside, salmon pink inside of petals.



PIERRE du PONT



McGREDDY'S SCARLET



AMI QUINARD

FROM

PLUMFIELD NURSERIES

FREMONT,

NEBRASKA



ORDER SHEET

Plumfield Nurseries

FREMONT, NEBRASKA

Date.....194.....

Your Name.....
Write Very Plainly

Postoffice.....

State.....

Street, P. O. Box
 or Rural Delivery.....

AMOUNT ENCLOSED	
\$	
<input type="checkbox"/> Check	<input type="checkbox"/> Money Order
<input type="checkbox"/> Draft	<input type="checkbox"/> Cash
Mark X in Proper ()	

How Goods are to be sent? Mail..... Express..... Freight.....

Express: what town..... Freight: what town.....

BE SURE TO GIVE KIND, SIZE AND COLOR

QUANTITY	NAME OF VARIETY	SIZE	PRICE	TOTAL
TOTAL AMOUNT - - - - -				

USE BACK OF SHEET IF NECESSARY

If mail shipment is desired, add 10% to order, unless order is under \$2.00.
 then add 20c to cover special packing and postage.

Plumfield ROSES

HYBRID PERPETUALS

2 year heavy, selected plants, \$1.25 each; 3 for \$3.50; 12 for \$13.00. 2 year standard plants, \$1.00 each; 3 for \$2.90; 12 for \$10.00.

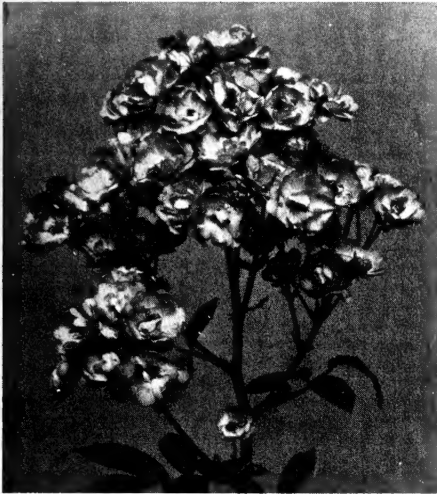
More hardy than most of the Tea Roses. Do not bloom continuously but will bloom satisfactorily.

AMERICAN BEAUTY—A very popular cerise-red variety.

FRAU KARL DRUSCHKI—Very popular, large, pure white.

GENERAL JACQUEMINOT (Gen. Jack)—Old favorite, dark red garden rose.

PAUL NEYRON—Large rose-pink flowers. Almost thornless.



CRIMSON BABY

BABY ROSES

2 year heavy, selected plants, \$1.25 each; 3 for \$3.50; 12 for \$13.00. 2 year standard plants, \$1.00 each; 3 for \$2.90; 12 for \$10.00.

BABY ROSES or **DWARF POLYANTHA**

CATHERINE ZEIMET—Double, pure white, fragrant. Borne in large clusters.

CRIMSON BABY—Small, semi-double, light crimson. Dense clusters.

EDITH CAVELL—Brilliant scarlet, overlaid velvety crimson.

ELLEN PAULSEN—Rather large, fairly full flowers of bright rose-pink. Slightly fragrant.

GOLDEN SALMON SUPERIOR—Bright orange-salmon. Blooms continually. An improvement on Golden Salmon.

GRUSS AN AACHEN—White tinted carmine, full double flowers.

KAREN POULSEN—Large clusters of open scarlet blooms.

IDEAL—Dark scarlet, borne in profusion. Immense, compact bunches. Vigorous and blooms continuously.



PAUL'S SCARLET

CLIMBING ROSES

CLIMBING AMERICAN BEAUTY—Brilliant carmine-red. 2 year select, \$1.25 each; 3 for \$3.50. 2 year standard, \$1.00 each; 3 for \$2.90.

PAUL'S SCARLET—Intense scarlet flowers of excellent shape and moderate size. Borne in small trusses. 2 year select, \$1.25 each; 3 for \$3.50. 2 year standard, \$1.00 each; 3 for \$2.90.

CRIMSON RAMBLER—Deep crimson. 2 year select, \$1.00 each; 3 for \$2.90; 2 year standard, 75c each; 3 for \$2.40.

DOROTHY PERKINS—Shell pink. 2 year select, \$1.00 each; 3 for \$2.90; 2 year standard, 75c each; 3 for \$2.40.

GARDENIA—Rich creamy yellow. Borne in small sprays. 2 year select, \$1.00 each; 3 for \$2.90. 2 year standard, 75c each; 3 for \$2.40.



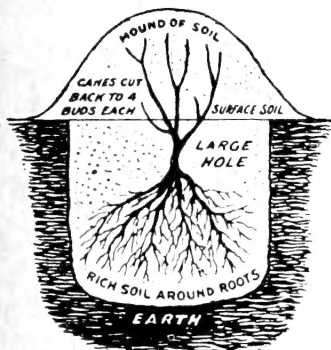
F. J. GROOTENDORST

RUGOSA, RUGOSA HYBRID and MISCELLANEOUS ROSES

AUSTRIAN COPPER—Single, intense copper-red, reverse of petals yellow. 2 to 3 ft., \$1.25 each; 3 for \$3.50. 18 to 24 inches, \$1.00 each; 3 for \$2.90.

F. J. GROOTENDORST—Double Bright crimson in large clusters. 2 to 3 ft., \$1.25 each; 3 for \$3.50. 18 to 24 inches, \$1.00 each; 3 for \$2.90.

HUGONIS—Light yellow flowers borne profusely on slender branches. 2 to 3 feet, \$1.25 each; 3 for \$3.50. 18 to 24 inches, \$1.00 each; 3 for \$2.90.



How to Plant Roses.

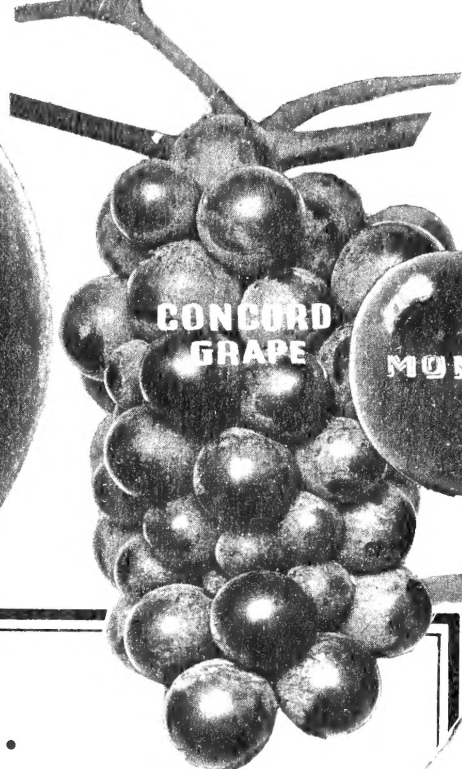
Be sure to read our Planting Instructions, "How to Plant Your Roses." This is important if you expect to get a good survival.

How To Plant Your Roses

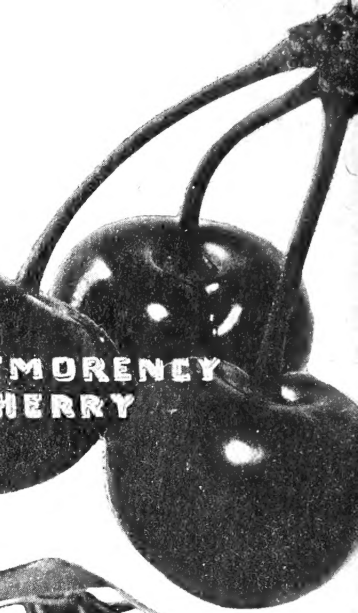
To obtain success in planting roses it is important that they are properly planted. The roots should be trimmed back some and the hole dug large enough so that roots will not be crowded. Place the plant in the hole so that the bud union above the roots is at least two inches below the level of the ground, then fill in around the roots with dirt and water in well. After the water has seeped away, cut each cane back to about four inches above the level of the ground and cover the plant over completely with a mound of earth. After about six inches of new growth has forced through the mound of earth you can hoe the mound away gradually.



DARK RED JONATHAN APPLE



CONCORD GRAPE



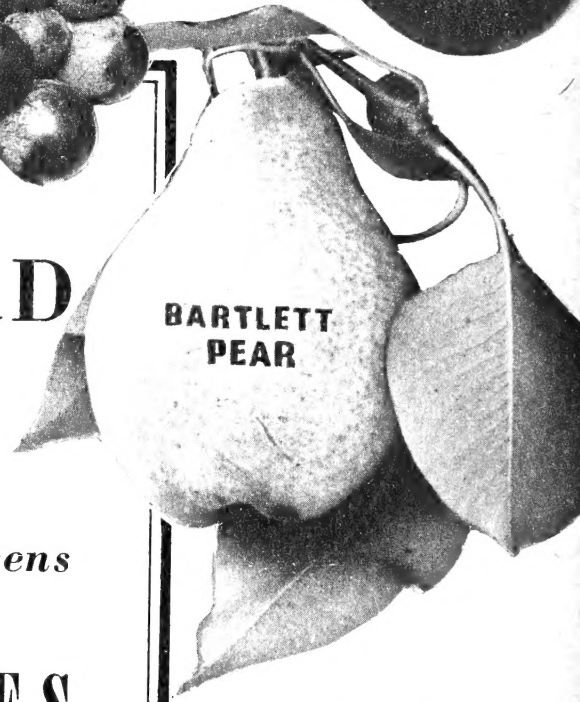
MONTMORENCY CHERRY

Plant . . .

**A HOME ORCHARD
and
GARDEN**

*Select Your Trees, Plants and Evergreens
at Our Nurseries*

**PLUMFIELD NURSERIES
FREMONT, NEBRASKA**



BARTLETT PEAR



WANETA PLUM



LATHAM RASPBERRIES



ELBERTA PEACH

*Mail Orders Receive
Prompt Attention*